

STYLUS.LONDON

Stylus

116_OLD_STREET_EC1

FLOOR PLAN

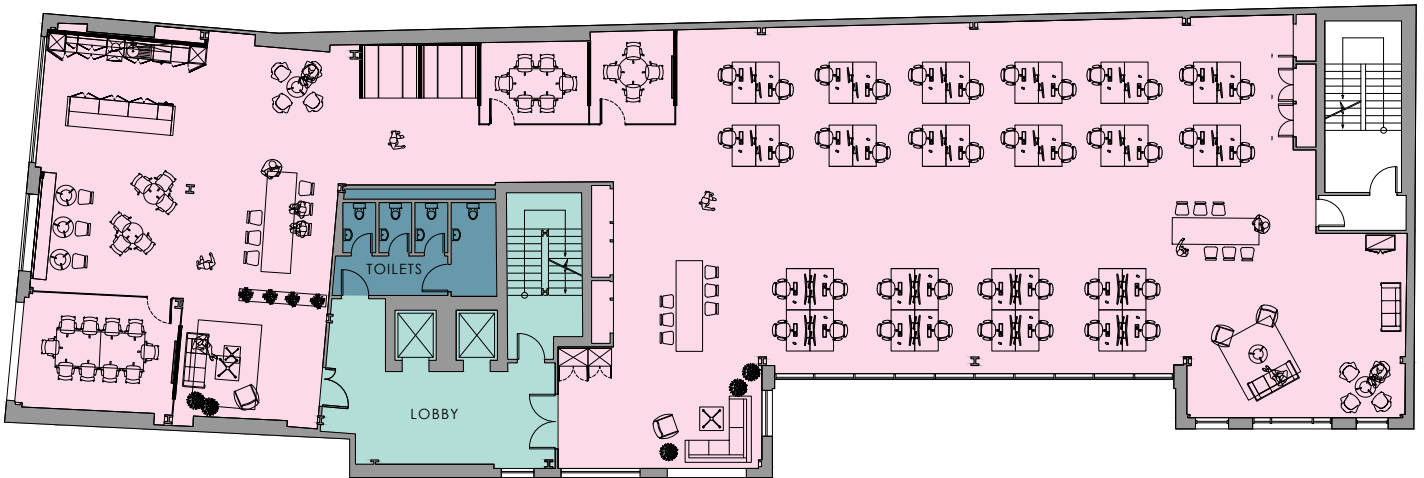




FLOOR PLAN

FIRST FLOOR

5,437 SQ FT 505 SQ M



NIA
 Common areas
 Toilets/Showers

ACCOMMODATION SCHEDULE

1,400mm x 800mm Workstations	40
Meeting Room (10 persons)	1
Meeting Room (6 persons)	1
Meeting Room (4 persons)	1
Breakout Areas	6
Quiet Booths	2
Kitchenette/Dining Area	1

SPECIFICATION

- + New glazed frontage
- + Heating and cooling system throughout. A/C system with multiple internal fan coil units on each floor
- + Two 9-person lifts serving all floors from basement to fourth floor
- + Excellent floor to ceiling height of 3m+
- + Column-free floor plates
- + Low energy LED lighting
- + Fibre optic Internet connectivity
- + Renewable energy for electricity generation
- + CCTV, Video Entry system and key fob access
- + Cycle storage for 44 bikes, drying room, 81 lockers and shower changing area
- + Lower ground level landscaped courtyard
- + Eco-friendly biodiverse roof

[VIEW TOUR](#)

CONTACT

allsop

Tom Nicoll
07734 680 412
Tom.Nicoll@allsop.co.uk

James Neville
07789 658 540
james.neville@allsop.co.uk



Oliver Jay
07903 714 187
oj@compton.london

Joshua Miller
07917 725 365
jm@compton.london

Development by

